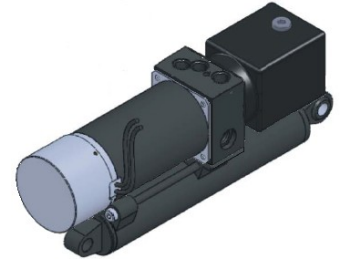


Features

- Cylinder directly mounted to pump, motor, reservoir and valve package
- Minimum Piping, minimal leak points,
- Compact Design
- Easy installation
- Bi-Directional Pump for cylinder extend and retract

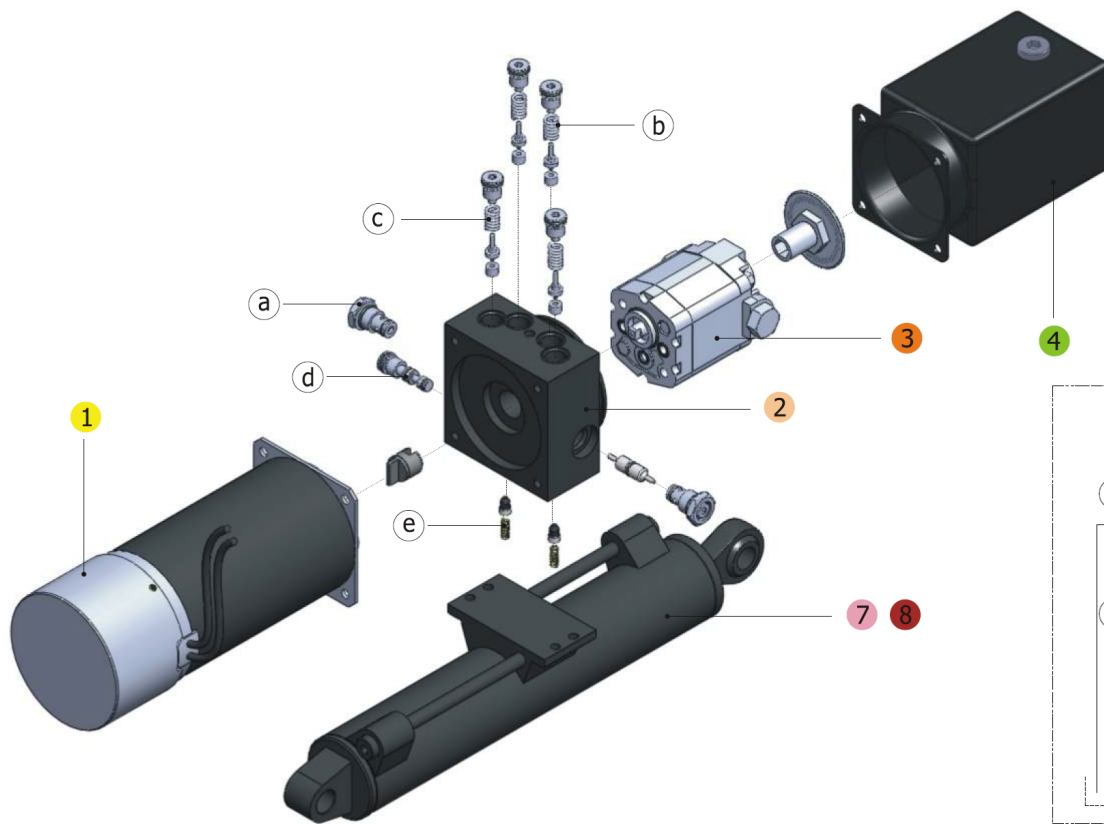


Ordering Details

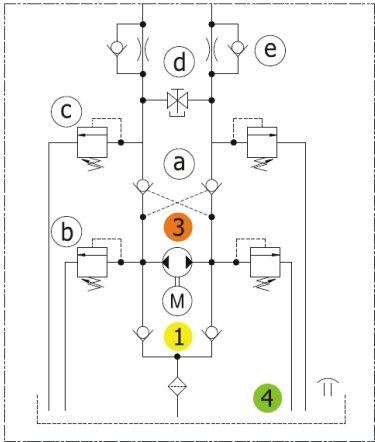
S	System												
CC-	Compact Power Unit with Cylinder												
07-	Reservoir Capacity: (reference page 4)												
	<table border="1" style="width: 100%; border-collapse: collapse;"> <thead> <tr> <th style="width: 33%;">Cylinder Diameter, mm</th> <th style="width: 33%;">Reservoir Capacity, Liter</th> <th style="width: 33%;">Code</th> </tr> </thead> <tbody> <tr> <td style="text-align: center;">40</td> <td style="text-align: center;">0.7</td> <td style="text-align: center;">07</td> </tr> <tr> <td style="text-align: center;">50</td> <td style="text-align: center;">0.7</td> <td style="text-align: center;">07</td> </tr> <tr> <td style="text-align: center;">60</td> <td style="text-align: center;">1.0</td> <td style="text-align: center;">10</td> </tr> </tbody> </table>	Cylinder Diameter, mm	Reservoir Capacity, Liter	Code	40	0.7	07	50	0.7	07	60	1.0	10
	Cylinder Diameter, mm	Reservoir Capacity, Liter	Code										
	40	0.7	07										
50	0.7	07											
60	1.0	10											
EG	Pump Type, External Gear												
0.3-	Pump Volume, Centimeters ³ /rev.: 0.2, 0.3, 0.5, (reference page 5 and 6 for speed and force)												
-H	Mounting Direction: V=Vertical (Rod up), H=Horizontal, D=Vertical (Rod Down)												
.4-	Motor Power: .4=.4HP=300Watts, .67=.67HP=500Watts (reference page 5 and 6 for guide)												
12	Motor Voltage: 12=12VDC, 24=24VDC (Insulation Class F, Duty Cycle S2/2.5min)												
E-	Circuit Options:												
	<div style="display: flex; justify-content: space-around;"> <div style="text-align: center;"> <p>Code E:</p> </div> <div style="text-align: center;"> <p>Code F:</p> </div> </div>												
50	Cylinder Bore Diameter, mm: 40, 50, 60												
E	Cap Side Clevis Orientation: A=parallel with motor, E=perpendicular to motor (reference page 3 and 4)												
T	Rod Connection Type: B=with alignment bearing, T=with through hole (reference page 3 and 4)												
200-	Stoke, mm: 150, 200, 250, 300												
1	Series: 1												

Example Part Number: SCC-07-EG0.3-H.4-12-E-50ET200-1

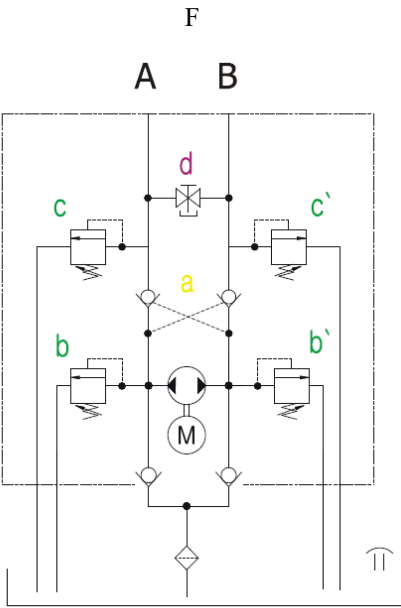
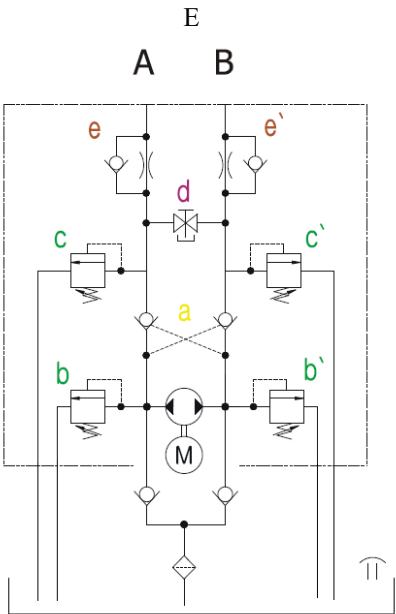
Assembly



1	Motor
2	Center block
a	Pilot check valve
b	Relief valve
c	Overload valve
d	Emergency valve
e	Orifice valve
3	Pump
4	Tank
7/8	Cylinder & Clevis



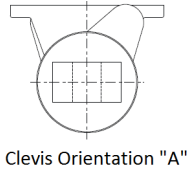
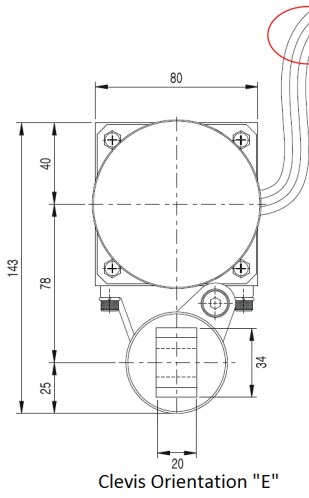
Manifold Options:



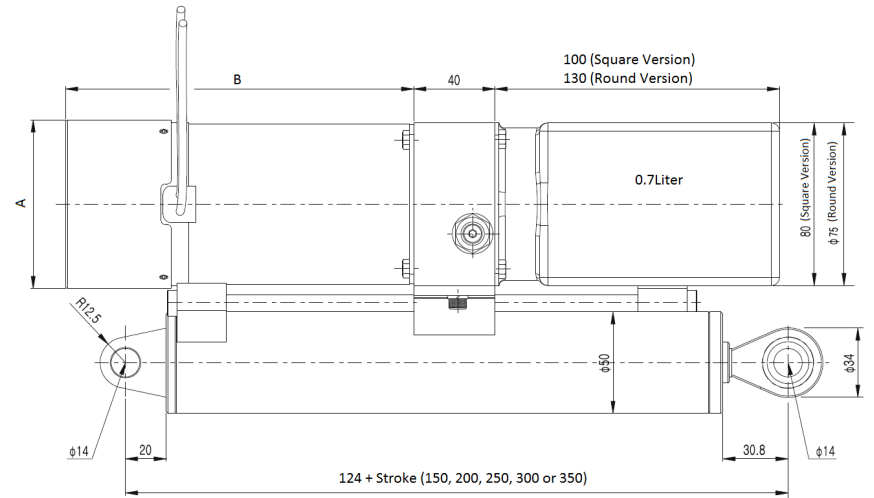
Relief and Overload Valve Pressure Settings		
Pump, cc/rev	b Relief, bar	c Overload, bar
.2	185	210
.3	175	210
.5	125	150

Dimensions:

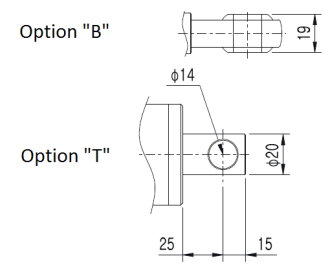
Ø40 mm Cylinder:



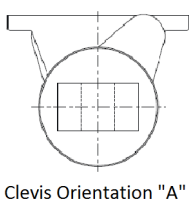
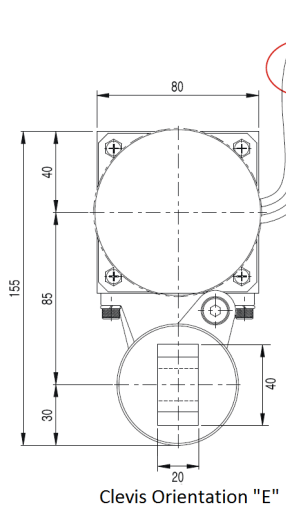
FORWARD :
YELLOW '+', BLACK '-'
BACKWARD :
YELLOW '-', BLACK '+'



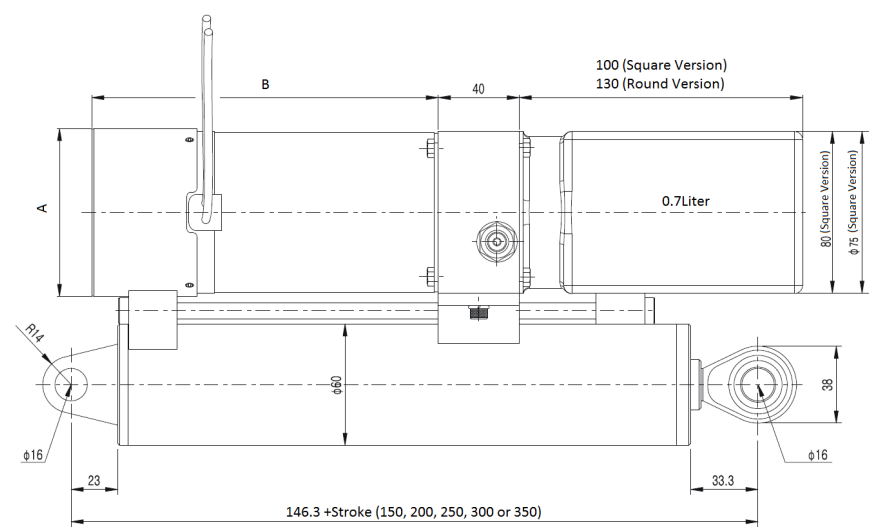
Motor Power, Watts	Voltage	Circuit Breaker	A	B
300 and 500	12 and 24	No	79	132
		Yes	83	171.3
800	12 and 24	No	79	132
		Yes	83	188.3



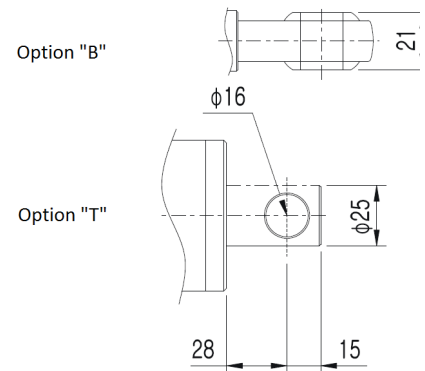
Ø50 mm Cylinder:



FORWARD :
YELLOW '+', BLACK '-'
BACKWARD :
YELLOW '-', BLACK '+'

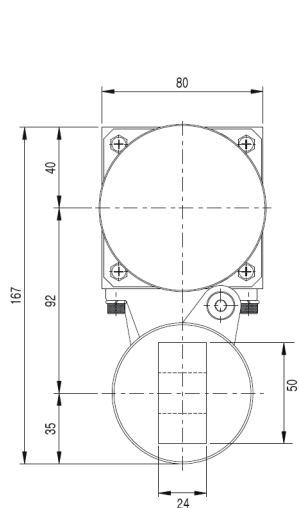


Motor Power, Watts	Voltage	Circuit Breaker	A	B
300 and 500	12 and 24	No	79	132
		Yes	83	171.3
800	12 and 24	No	79	132
		Yes	83	188.3

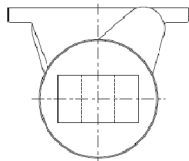


Dimensions:

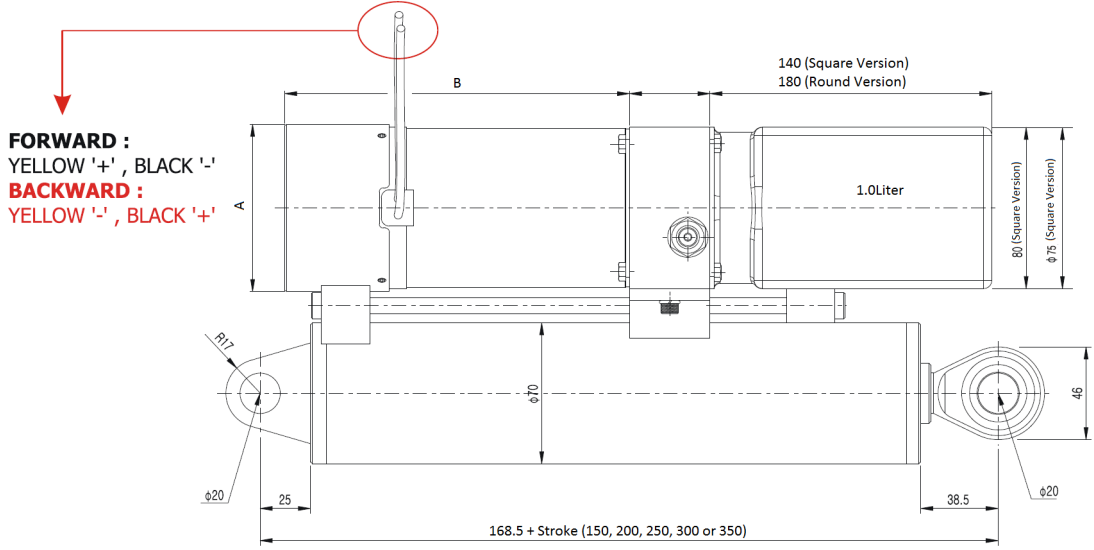
Ø60 mm Cylinder:



Clevis Orientation "E"

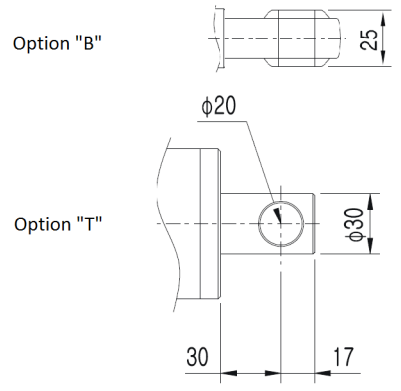


Clevis Orientation "A"



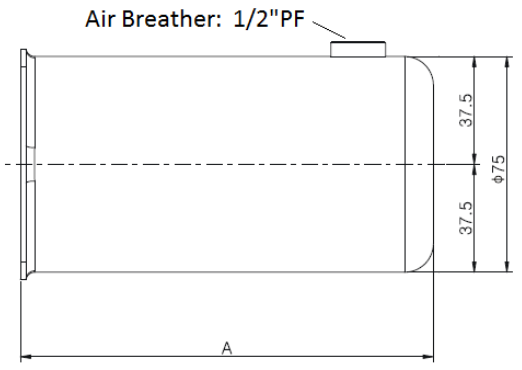
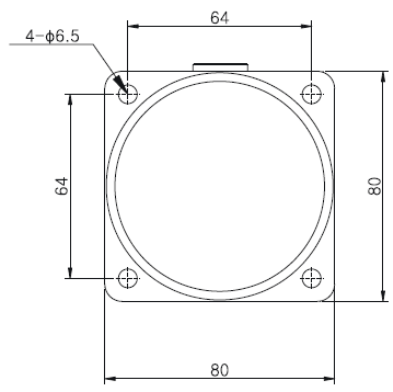
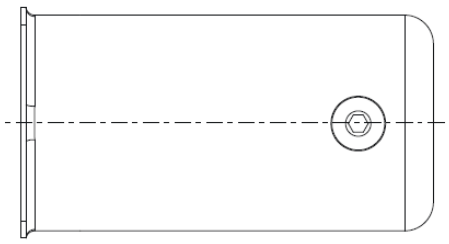
FORWARD :
YELLOW '+', BLACK '-'
BACKWARD :
YELLOW '-', BLACK '+'

Motor Power, Watts	Voltage	Circuit Breaker	A	B
300 and 500	12 and 24	No	79	132
		Yes	83	171.3
800	12 and 24	No	79	132
		Yes	83	188.3



Reservoir Details

Volume Liter	Usable Liter	A	B
0.7	0.3	78	130
1.0	0.6	118	180



Air Breather: 1/2"PF

Technical Specifications: 300 KW Motor

Motor Power	Pump	Cylinder Diameter	Pressure	Motor Current	Rod Extend Speed	Extend Force
KW	cc/rev	mm	Bar	Amps	mm/s	Kg
300	0.2	40	0	9.6	9.2	0
			35	14.0	8.1	440
			70	19.2	7.2	880
			105	23.4	6.2	1319
			140	29.0	5.3	1759
			175	35.7	4.2	2199
			210	40.7	2.9	2639
		50	0	9.6	5.9	0
			35	14.0	5.2	687
			70	19.2	4.6	1374
			105	23.4	4.0	2062
			140	29.0	3.4	2749
			175	35.7	2.7	3436
			210	40.7	1.9	4123
		60	0	9.6	4.1	0
			35	14.0	3.6	990
			70	19.2	3.2	1979
			105	23.4	2.8	2969
			140	29.0	2.4	3958
			175	35.7	1.9	4948
			210	40.7	1.3	5937
300	0.3	40	0	8.3	14.5	0
			35	16.3	12.6	440
			70	22.7	10.6	880
			105	32.0	8.5	1319
			140	44.4	6.4	1759
			175	53.7	3.3	2199
			210	-	-	-
		50	0	8.3	9.3	0
			35	16.3	8.1	687
			70	22.7	6.8	1374
			105	32.0	5.4	2062
			140	44.4	4.1	2749
			175	53.7	2.1	3436
			210	-	-	-
		60	0	8.3	6.4	0
			35	16.3	5.6	990
			70	22.7	4.7	1979
			105	32.0	3.8	2969
			140	44.4	2.8	3958
			175	53.7	1.5	4948
			210	-	-	-

Consult factory for other size parameters

Technical Specifications: 500KW motor

Motor Power	Pump	Cylinder Diameter	Pressure	Motor Current	Rod Extend Speed	Extend Force
KW	cc/rev	mm	Bar	Amps	mm/s	Kg
500	0.3	40	0	13.0	17.5	0
			35	22.0	14.6	440
			70	32.0	12.6	880
			105	41.0	11.0	1319
			140	48.0	9.3	1759
			175	53.0	7.8	2199
			210	59.0	5.8	2639
		50	0	13.0	11.2	0
			35	22.0	9.3	687
			70	32.0	8.1	1374
			105	41.0	7.0	2062
			140	48.0	5.9	2749
			175	53.0	5.0	3436
			210	59.0	3.7	4123
		60	0	13.0	7.8	0
			35	22.0	6.5	990
			70	32.0	5.6	1979
			105	41.0	4.9	2969
			140	48.0	4.1	3958
			175	53.0	3.5	4948
			210	59.0	2.6	5937
500	0.5	40	0	16.0	26.9	0
			35	28.6	22.5	440
			70	41.6	19.2	880
			105	52.1	16.6	1319
			140	64.0	13.5	1759
			175	76.8	9.5	2199
			200	88.4	6.6	2513
		50	0	16.0	17.2	0
			35	28.6	14.4	687
			70	41.6	12.3	1374
			105	52.1	10.6	2062
			140	64.0	8.7	2749
			175	76.8	6.1	3436
			200	88.4	4.2	3927
		60	0	16.0	12.0	0
			35	28.6	10.0	990
			70	41.6	8.5	1979
			105	52.1	7.4	2969
			140	64.0	6.0	3958
			175	76.8	4.2	4948
			200	88.4	2.9	5655

Consult factory for other size parameters